

HAWAII ISLANDS INSIDER - 4 ISLANDS ESCORTED TOUR - GUIDED IN ENGLISH

Hawaii 4 Islands Escorted Tour - Guided in English. 11 days/10 nights. Start: Oahu - End: Maui.

2026 DEPARTURE DATES ENGLISH/DUTCH

JANUARY	No departures				
FEBRUARY	No departures				
MARCH	No departures				
APRIL	-	-	-	-	-
MAY				26	
JUNE		09		23	
JULY	07		21		
AUGUST	04		18		
SEPTEMBER	01		15		
OCTOBER		13		27	
NOVEMBER		10		24	
DECEMBER	No departures				

DAY 1

ARRIVAL OAHU - HONOLULU AIRPORT

A 20 KM

Upon arrival to the island of Oahu, known as "The Gathering Place", you will be met and given a traditional flower lei greeting by the ATI Hawaii Local Representative, before transferring to world-famous Waikiki Beach, and your hotel.



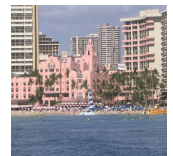
DAY 2

HONOLULU - OAHU ISLAND EXCURSION COACH+GUIDE

A 120 KM

This morning meet your tour escort and depart for a full day tour of Oahu. We first visit majestic Diamond Head. This extinct volcano is the backdrop to Waikiki beach and offers superb views from the summit. We also visit the exclusive Kahala residential area where some of Hawaii's most spectacular homes are to be found. You will pass by Iolani Palace, the King Kamehameha Statue, and the Governor's Mansion. After Lunch we head for the scenic North Shore to see the dramatic coastline and some of the most revered surfing beaches of the State. Evening at Leisure.

Optional dinner at the famous Duke's restaurant.



DAY 3

OAHU/HONOLULU - BIG ISLAND/KONA

A 20 KM

Time to explore Waikiki beach on your own this morning before meeting your driver for the short transfer to Honolulu Airport for your brief flight to Kona, on the Big Island of Hawaii. Upon arrival at the airport, you will be met and transfer to your hotel. Settle in and perhaps take an evening stroll along the beautiful shore.

**DAY 4**

BIG ISLAND - VISIT 1

A 100 KM

This morning embark on a tour of Volcanoes National Park. (Note: because this is an active volcano area, last minute diversions may be necessary for safety's sake.) Drive down the slopes of Pele's home, Kilauea, passing Ka Lae, the southernmost tip of the United States. Your Escorted Island Tour also takes you to the Kailua Kona area and its famed Royal Kona Coffee Museum where you will be able to taste Kona Coffee during your stop over. View the picturesque Kealahou Bay as well as Captain Cook's Monument. Return to your hotel in early evening.

**DAY 5**

BIG ISLAND - VISIT 2

A 15 KM

Enjoy a full day of the Hawaiian beaches and your resort hotel. You may additionally choose to take an optional evening tour to the summit of Mauna Kea for some of the best star gazing to be found. Hawaii's Big Island is home to one of the most renowned astronomical sites on the planet. Perched high atop Maunakea, rising 4205 meters above sea level, 13 telescopes representing 11 countries are watching the heavens and making discoveries beyond our wildest imaginations.

**DAY 6**

BIG ISLAND - KAUAI/LIHUE

A 15 KM

Transfer to the airport for your flight to Kauai, the oldest island in the Hawaiian chain. Kauai's first settlers appeared in approximately the 4th or 5th century A.D. Centuries passed before Captain Cook found Kauai on his voyage to Alaska. Kauai's residents are proud of the fact that it was the only Hawaiian island never conquered by King Kamehameha's forces. Upon arrival, you will be transferred to your hotel. The remainder of the day is at leisure to enjoy the beaches and the unique lush beauty of Kauai. You may also choose to join us this evening on an optional sunset cruise along the stunning NaPali coastline. This rugged stretch of coast is accessible only by air or boat and has been the setting of many Hollywood movies over the years, including King Kong in 1976.

**DAY 7**

KAUAI - VISIT

A 100 KM

Today we take a full day island tour. You will quickly understand why Kauai is nicknamed the Garden Isle. Celebrated for its brilliant emerald green tropical scenery, your tour will visit Bali Hai and Hanalei Bay, made famous by the movie South Pacific, as well as the beautiful Waimea Canyon

**DAY 8**

KAUAI - MAUI/KAHULUI

A 15 KM

This morning transfer to Lihue Airport for the short flight to Maui, the second largest island in the Hawaiian chain. Upon arrival you will be met and transferred to your hotel. The afternoon is at leisure. This evening enjoy an included sunset cruise from magnificent Kaanapali beach.

**DAY 9**

MAUI - VISIT 1

A 120 KM

Today meet your tour guide and visit tranquil Iao Valley, often cloaked in mystical fog, even when the rest of the island is bathed in bright sunlight. Here you will see the Iao Needle, a sharply pointed lava pinnacle rising 1,200 feet above the valley floor. Remainder of the day is at leisure. We suggest a visit to Lahaina town for lunch or dinner and shopping along the waterfront.

**DAY 10**

MAUI - VISIT 2

A 1 KM

Today is a full day at leisure to enjoy the beach, hotel grounds or nearby shopping and to reflect on your journey through the Islands.

**DAY 11**

DEPARTURE MAUI

A 30 KM

Time to bid the Hawaiian Islands a fond farewell, your transfer to Kahului airport for your flight to the mainland will end your memorable stay.

STANDARD HOTELS (EHA0001) IS AVAILABLE STARTING AT **3181 EUR**

Rooms	01.05.26 - 30.06.26	01.07.26 - 31.08.26	01.10.26 - 30.11.26
DOUBLE ROOM 1 BED (K21)	3181	3372	3181

Rooms	01.05.26 - 30.06.26	01.07.26 - 31.08.26	01.10.26 - 30.11.26
QUADRUPLE ROOM 2 BEDS (K42)	2529	2641	2529
TRIPLE ROOM 2 BEDS (K32)	2762	2900	2762
SINGLE ROOM (K11)	5060	5416	5060
MEALS AS PER PROGRAMME (R02)	Free	Free	Free

HAWAII 4 ISLANDS UPGRADE 2435 (EHA0002) IS AVAILABLE STARTING AT **3542 EUR**

Rooms	01.05.26 - 30.06.26	01.07.26 - 31.08.26	01.10.26 - 30.11.26
DOUBLE ROOM 1 BED (K21)	3542	3672	3542
QUADRUPLE ROOM 2 BEDS (K42)	2769	2835	2769
TRIPLE ROOM 2 BEDS (K32)	3056	3143	3056
SINGLE ROOM (K11)	5783	6041	5783
MEALS AS PER PROGRAMME (R02)	Free	Free	Free

INCLUDED

- 10 nights, room and taxes. Choose between two room categories.
- Transfers on every island at arrival and departure + Lei Greeting at arrival in Honolulu.
- Transport with a modern touring car or maxi van, depending on the amount of participants.
- Splendid English - speaking guides, another guide on every island.
- Three inter-island flights (Honolulu - Kona - Lihue - Kahului)
- Admission to the National Park and visits mentioned in the programme.

NOT INCLUDED

All services NOT mentioned such as:

- International passport and charges for
 - ESTA - 40 USD per person-Valid for 2 years (USA) and / or
 - ETA- 7 CAD per person-Valid for 5 years(Canada).
- Airline tickets, airport taxes, fuel surcharge, security fee, and more.
- Eventual costs to comply with sanitary and health conditions , pasports and or certificates and tests.
- Transfer from the airport to hotel on arrival and on departure, exept where otherwise detailed in the description
- Meals at the hotels or outside except if confirmed differently at time of confirmation.
- Insurances (cancellation insurance, travel and assistance insurance, luggage insurance, etc).
- All personal expenses (Food & Drinks), souvenirs and more.
- The usual tip (part of their salary) for the Driver and the Guide (usually per person 4 usd per day)

GOOD TO KNOW

FLIGHTS:

Wings 'n Wheels offers you a wide choice of European and American airlines providing daily flights from Brussels (Zaventem) to America and Canada, as well as from the main airports in neighboring countries (e.g. Amsterdam, Paris...).

International & any domestic flights are NOT included in the prices, unless specifically mentioned otherwise. More and more airlines are adjusting prices very quickly according to occupancy and market situation. Send the contact form below to your travel office (Choose from the list the postal number or the name of the municipality or name of travel office) or send the form to info@wnw.be with your desired outward and return dates as well as name, first name and date of birth of each person and Wings 'n Wheels will quickly and without obligation propose the best flight / price combination.

TRIP EXTENSION:

If you want extra nights before or after the guided tour or another extension of your trip, please mention this as detailed as possible in your mail. All this can have an influence on flight combinations and prices.